

Douglas County Criminal Justice Statistics - 11/17/23

Douglas County Correctional Facility (DCCF) - updated each Friday

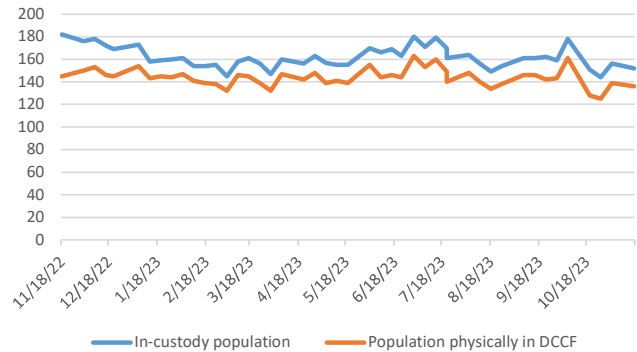
In-custody population	152
In-custody population by gender, race, and ethnicity	
Male	131 86%
Female	21 14%
Asian	0 0%
Black	52 34%
Native American	10 7%
White	89 59%
Hispanic	9 6%
Non-Hispanic	143 94%

In-custody population by county of residence	
Douglas County resident	108 71%
Not Douglas County resident	39 26%
No address (usually homeless in Dg Co)	5 3%

Population housed in other county jails	2
Population at inpatient psychiatric and drug treatment facilities	14
Population physically in DCCF	136
Awaiting Larned/Osawat. bed for competency	9



DCCF Populations



Criminal Justice Services - updated on the first day of each month

Pretrial Release Program

An alternative to incarceration program established in 2017. Information is available at: <https://douglascountyks.org/depts/pretrial/faq>.

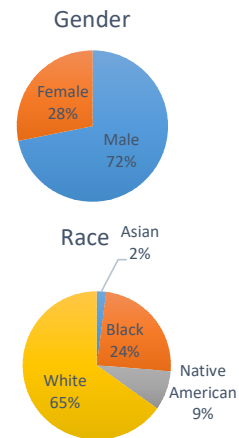
Total supervisions since 2017	2,385
Current population	199

Population by gender, race, and ethnicity	
Male	143 72%
Female	56 28%
Asian	4 2%
Black	48 24%
Native American	17 9%
White	129 65%
Hispanic	15 8%
Non-Hispanic	184 92%

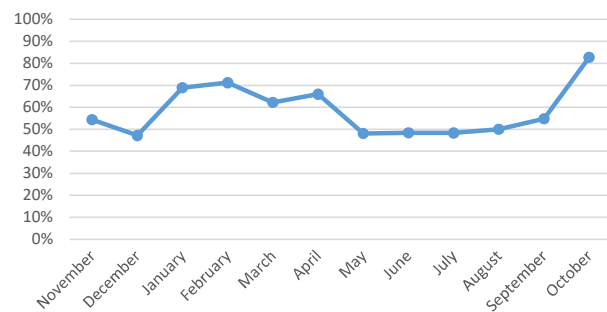
Population by electronic monitoring	
Electronic monitoring	43 22%
No electronic monitoring	156 78%

	October	Last 4 Months
Total seen at in-custody first appearance	41	230
Total eligible for pretrial program	29	177
Total approved for pretrial program	24	99
Percent of eligible approved	83%	56%
Monitoring closed successfully	*	96
New charge (monitoring suspended)	*	1
Failure to appear (monitoring suspended)	*	35
Failure to comply (additional conditions added by the court)	*	8
Percent closed successfully	*	69%

* October outcomes are unavailable due to Odyssey not currently operating.



Percent of Eligible Approved

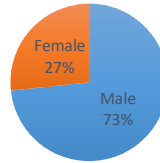


House Arrest Program

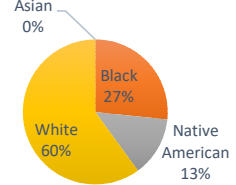
In operation since October 2017, the house arrest program allows approved individuals to serve a sentence out of custody and within the community. Information is available <http://dgcoks.org/housearrest>.

Current population	15	
Population by adult status		
Adult	15	100%
Juvenile	0	0%
Population by gender and race		
Male	11	73%
Female	4	27%
Asian	0	0%
Black	4	27%
Native American	2	13%
White	9	60%
Hispanic	0	0%
Non-Hispanic	15	100%
Population by court jurisdiction		
Municipal Court	8	57%
District Court	6	43%
	<u>October</u>	<u>Last 4 Months</u>
Successfully completed	10	43
Closed due to non-compliance	0	5
Total completed	10	48
<i>Percent successfully completed</i>	<i>100%</i>	<i>90%</i>

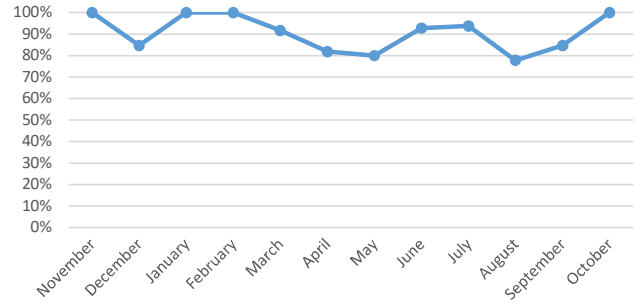
Gender



Race



Percent Successfully Completed



Behavioral Health Court

A specialty court docket for people with complex behavioral health and substance abuse needs. Established in 2017. Information at: <http://dgcoks.org/bhcourt>.

Current participants	25	
<u>Exits since start of program</u>		
Successful graduates	63	
Terminations/discharges	35	
Voluntary withdrawals and transfers	19	
<i>Graduation rate</i>	<i>53%</i>	

Drug Court

Drug Court, established in 2020, seeks to reduce recidivism of individuals with a substance use disorder. Information at: <https://www.douglascountyks.org/depts/district-attorney/douglas-county-drug-court-information>

Current participants	17	
<u>Exits since start of program</u>		
Successful graduates	17	
Terminations	9	
Voluntary withdrawals and transfers	5	
<i>Graduation rate</i>	<i>55%</i>	