

## Douglas County Criminal Justice Statistics - 10/27/23

### Douglas County Correctional Facility (DCCF) - updated each Friday

In-custody population 144

#### In-custody population by gender, race, and ethnicity

Male	122	85%
Female	22	15%
Asian	0	0%
Black	49	34%
Native American	7	5%
White	88	61%
Hispanic	8	6%
Non-Hispanic	136	94%

#### In-custody population by county of residence

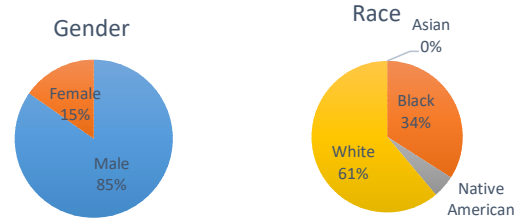
Douglas County resident	101	70%
Not Douglas County resident	38	26%
No address (usually homeless in Dg Co)	5	3%

Population housed in other county jails 6

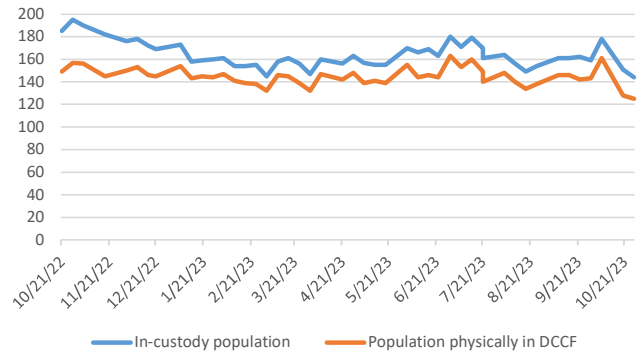
Population at inpatient psychiatric and drug treatment facilities 13

Population physically in DCCF 125

Awaiting Larned/Osawat. bed for competency 9



DCCF Populations



### Criminal Justice Services - updated on the first day of each month

#### Pretrial Release Program

An alternative to incarceration program established in 2017. Information is available at: <https://douglascountyks.org/depts/pretrial/faq>.

Total supervisions since 2017 2,351

Current population 174

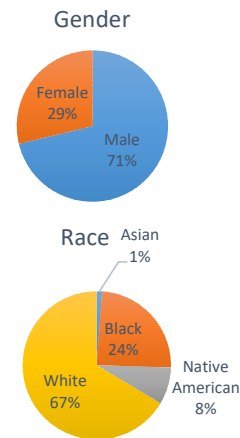
#### Population by gender, race, and ethnicity

Male	124	71%
Female	50	29%
Asian	2	1%
Black	42	24%
Native American	14	8%
White	115	66%
Hispanic	11	6%
Non-Hispanic	163	94%

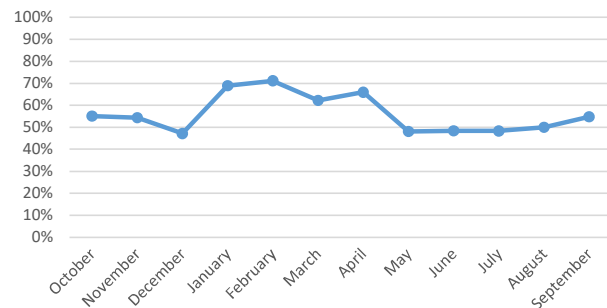
#### Population by electronic monitoring

Electronic monitoring	37	21%
No electronic monitoring	137	79%

	September	Last 4 Months
Total seen at in-custody first appearance	54	276
Total eligible for pretrial program	42	214
Total approved for pretrial program	23	107
Percent of eligible approved	55%	50%
Monitoring closed successfully	29	96
New charge (monitoring suspended)	0	1
Failure to appear (monitoring suspended)	7	35
Failure to comply (additional conditions added by the court)	0	8
Percent closed successfully	81%	69%



Percent of Eligible Approved

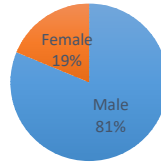


### House Arrest Program

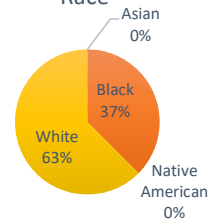
In operation since October 2017, the house arrest program allows approved individuals to serve a sentence out of custody and within the community. Information is available <http://dgcoks.org/housearrest>.

Current population	16	
<b>Population by adult status</b>		
Adult	16 100%	
Juvenile	0 0%	
<b>Population by gender and race</b>		
Male	13 81%	
Female	3 19%	
Asian	0 0%	
Black	6 38%	
Native American	0 0%	
White	10 63%	
Hispanic	1 6%	
Non-Hispanic	15 94%	
<b>Population by court jurisdiction</b>		
Municipal Court	9 60%	
District Court	6 40%	
	<b>September</b>	<b>Last 4 Months</b>
Successfully completed	11	46
Closed due to non-compliance	2	6
Total completed	13	52
<i>Percent successfully completed</i>	<i>85%</i>	<i>88%</i>

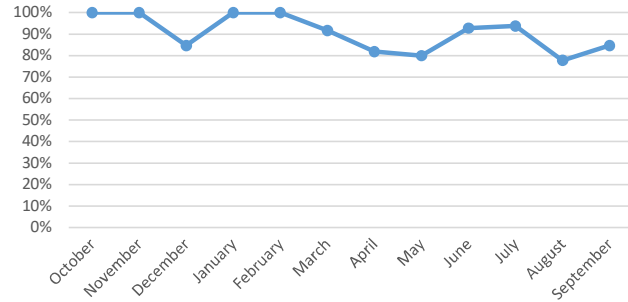
Gender



Race



Percent Successfully Completed



### Behavioral Health Court

A specialty court docket for people with complex behavioral health and substance abuse needs. Established in 2017. Information at: <http://dgcoks.org/bhcourt>.

Current participants	23
<b>Exits since start of program</b>	
Successful graduates	59
Terminations/discharges	34
Voluntary withdrawals and transfers	19
<i>Graduation rate</i>	<i>52%</i>

### Drug Court

Drug Court, established in 2020, seeks to reduce recidivism of individuals with a substance use disorder. Information at: <https://www.douglascountyks.org/depts/district-attorney/douglas-county-drug-court-information>

Current participants	18
<b>Exits since start of program</b>	
Successful graduates	16
Terminations	9
Voluntary withdrawals and transfers	5
<i>Graduation rate</i>	<i>53%</i>